

Hathaway Park Garfield Heights, Ohio

In order to retain and attract new young families, Garfield Heights, Ohio wanted to rectify a significant shortage of recreational facilities in the city. Working closely with the mayor, city council members, task force groups, and community groups URS conducted a recreational supply/demand analysis, master planning and budgeting process.

The proposed 48 acre site presented a number of design challenges to recreational development including a slope differential of 90 feet across the site, slope stabilization, steep wooded ravines, and tributary streams.

The park is designed to serve a wide variety of users with 2/3 of park area utilized for active recreation facilities and 1/3 preserved and restored as nature preserve with trails.

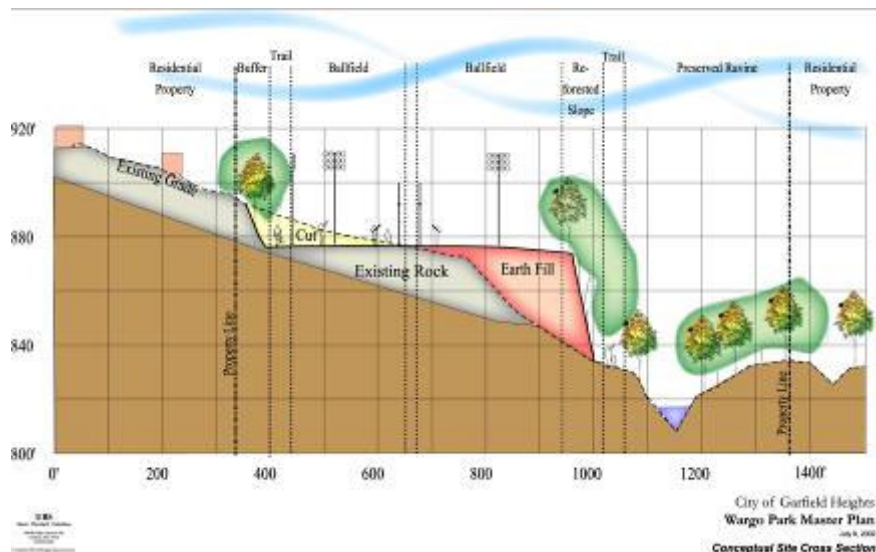
Phase One construction of Hathaway Park will include four baseball fields, one soccer field, a 170 space parking lot, overflow parking, a sledding hill, and a one mile nature trail. Baseball fields range in size, from peewee to colt/pony leagues.

Ecological restoration features include the careful preservation of over 15 acres of wooded ravines, and buffers, as well as stream and wetland mitigation. Over 2,200 lineal feet of stream restoration measures provide rock cascades, step pools and stream bank stabilization. Wetland mitigation was accomplished onsite through the expansion of an existing wetland area.

Construction of the \$3.3 million phase one project is anticipated to start in 2007.



Active recreation facilities utilize 2/3 of the site, 1/3 of site is preserved and restored as a nature preserve.



Conceptual cross section shows the challenging grades on site.